

**BXUV.U370  
Fire Resistance Ratings - ANSI/UL 263**

Page Bottom

**Fire Resistance Ratings - ANSI/UL 263**

See General Information for Fire Resistance Ratings - ANSI/UL 263

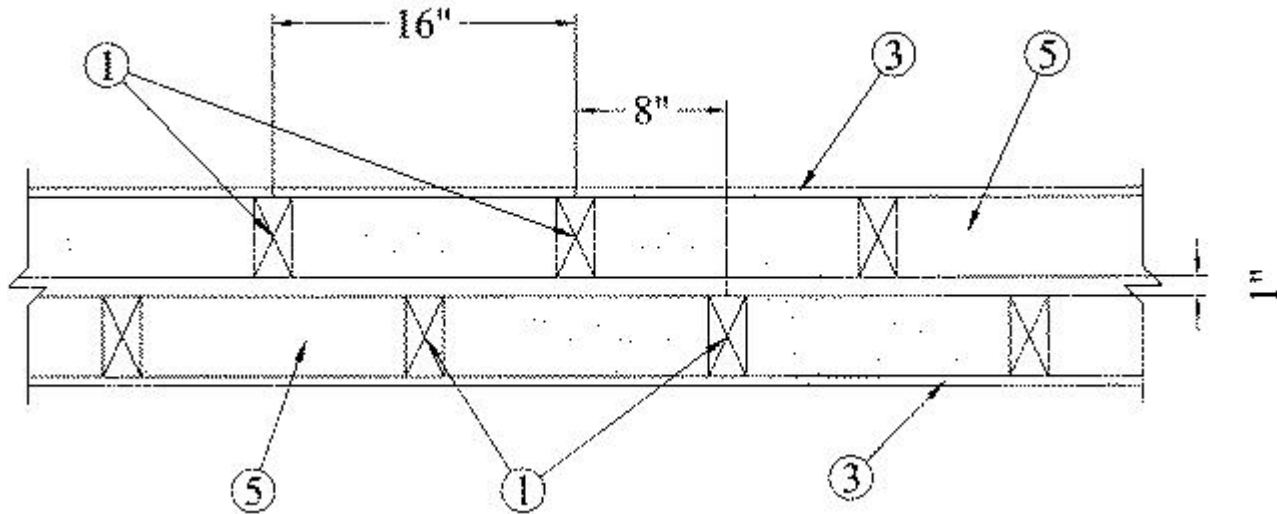
Design No. U370

November 06, 2006

**Bearing wall rating — 1-1/2, 2 Hr, or 3 Hr. (See Items 3 and 5)**

**Load Restricted for 2 Hr. Rating, 3 Hr. Rating — See Items 3 and 5**

**Load Restricted for Canadian Applications — See Guide BXUV7**

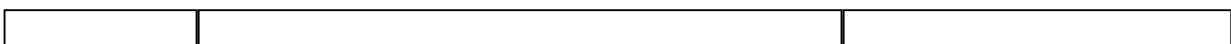


1. **Wood Studs** — Double row of nominal 2 x 4 in. studs, spaced 16 in. OC and cross-braced at mid-height. Opposite rows spaced 1 in. apart, staggered 8 in. OC and joined at the top and bottom with bearing plates.

2. **Bearing Plates** — (not shown) Nominal 2 x 4 in. Two layers on top and one layer on bottom for each row of studs.

3. **Wallboard, Gypsum\*** — 4 ft wide. gypsum wallboard applied horizontally (backed by 2 x 4 in. wood framing) or vertically and nailed to studs and bearing plates 7 in. OC with 6d cement coated nails, 1-7/8 in. long, 0.0915 in. shank diameter and 1/4 in. diameter head. When gypsum board is applied vertically, joints to be centered over studs. When gypsum board is applied horizontally, vertical butt joints to be centered over the studs and horizontal joints to be backed by 2 x 4 in. wood framing. As an alternative, No. 6 bugle head drywall screws, 1-7/8 in. long may be substituted for the 6d cement coated nails. The thickness and number of layers and percent of design load for the 1-1/2 hr and 2 hr ratings are as follows:

**Wallboard Protection on Each Side of Wall**



Rating	No. of Layers & Thkns of Panel	% of Design Load
1-1/2 Hr	1 layer, 5/8 in. thick	100
2 Hr	1 layer, 5/8 in. thick	75

**AMERICAN GYPSUM CO** — Type AG-C

**TEMPLE-INLAND FOREST PRODUCTS CORP** — Type TG-C

**UNITED STATES GYPSUM CO** — Type C

3A. **Wallboard, Gypsum\*** — 4 ft wide gypsum wallboard applied vertically, with the first layer of gypsum board attached with 6d cement coated nails spaced 10 in. OC., and the second layer of gypsum board attached with 8d nails spaced 7 in. OC. 1<sup>st</sup> and 2<sup>nd</sup> layer vertical joints are to be spaced at a maximum of 24 in.

**Wallboard Protection on Each Side of Wall**

Rating	No. of Layers & Thkns of Panel	% of Design Load
3 Hr	2 layers, 5/8 in. thick	75

**UNITED STATES GYPSUM CO** — Type C

4. **Joints and Screwheads** — (Not shown) — Wallboard joints taped and both joints and nailheads covered with joint compound.

5. **Fiber, Sprayed\*** — Spray applied cellulose material. The fiber is applied with water to completely fill the enclosed 8 in. cavity in accordance with the application instructions supplied with the product. The nominal dry density and percent of design load for the 1-1/2 hr and 2 hr ratings are as follows:

Rating	Nominal Dry Density	% of Design Load
1-1/2 Hr	2.60 lb/ft <sup>3</sup>	100
2 Hr	3.35 lb/ft <sup>3</sup>	75
3 Hr	3.89 lb/ft <sup>3</sup>	75

**U S GREENFIBER L L C** — FRM (Fire Rated Material)

6. **Mesh Netting** — (Not shown) - Any thin, woven or non-woven fibrous netting material attached with staples to the outer face of one row of studs to facilitate the installation of the sprayed fiber from the opposite row.

7. **Oriented Strand Board or OSB** — (Optional) — Minimum 1/4 in. thick OSB panels applied vertically or horizontally to either interior side of wood studs (between the stud rows). A minimum 1 in. clearance must be maintained between stud rows. Joints located over the wood studs. OSB panels fastened to the wood studs with 6d nails at a maximum of 6 in. OC. at the perimeter and 12 in. OC. at the field.

\*Bearing the UL Classification Mark

Last Updated on 2006-11-06

[Questions?](#)

[Notice of Disclaimer](#)

[Page Top](#)

The appearance of a company's name or product in this database does not in itself assure that products so identified have been manufactured under UL's Follow-Up Service. Only those products bearing the UL Mark should be considered to be Listed and covered under UL's Follow-Up Service. Always look for the Mark on the product.

UL permits the reproduction of the material contained in the Online Certification Directory subject to the following conditions: 1. The Guide Information, Designs and/or Listings (files) must be presented in their entirety and in a non-misleading manner, without any manipulation of the data (or drawings). 2. The statement "Reprinted from the Online Certifications Directory with permission from Underwriters Laboratories Inc." must appear adjacent to the extracted material. In addition, the reprinted material must include a copyright notice in the following format: "Copyright © 2006 Underwriters Laboratories Inc.®"

An independent organization working for a safer world with integrity, precision and knowledge.

